

PAL Pipette Tool



CLINICAL



LIFE SCIENCE



CHEMICAL

**PAL Pipette Tool - Essential for Life Science,
Clinical and Chemical Applications**



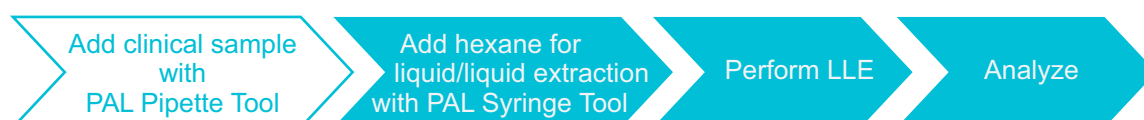
PAL Pipette Tool – Essential for sample preparation

Pipetting liquids with tips is a common practice in many applications. The most important feature is probably the fact that carryover is zero by design because the used tip is discarded after every sample transfer. Moreover, functionalized tips (e.g. for desalting or protein capture) allow for effective sample work-up.

The new PAL Pipette Tool significantly enhances the PAL System sample prep platform. In combination with the complete range of tools and modules the PAL Pipette Tool facilitates seamless lab workflows, especially in combination with the PAL DeCapper Module:



Only the PAL RTC can switch automatically between pipettes and positive displacement syringes. Pipettes are free from carryover by design. Chemically inert glass syringes are best when highest accuracy and compatibility with organic solvents is required.



Application areas:

- Serial dilutions
- Micro SPE in a tip
- Protein digestion in a tip
- Reformatting of samples
- Pipetting of suspensions (e.g. magnetic beads) and emulsions

Highlights:

- Carryover free sample handling
- Complete workflows in combination with PAL Tool and Modules
- Direct injection from the Pipette Tool into HPLC valves (see fig. 1)
- Glass syringe (positive displacement) and Pipette Tool on one system
- Tested PAL Consumables like pipette tips and racks enhance the performance further

Technical data, ordering information:

0-200 μL P/N PAL3-TH-Pip-200

0-1000 μL P/N PAL3-TH-Pip-1000

PAL3 Firmware: 2.4.x or later

Detailed specifications are available.

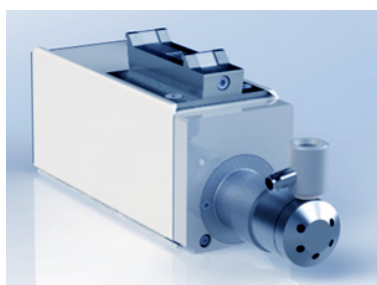


Fig. 1: Wash module and adapter for LC-injection port with Pipette Tool (PN PAL3-WashPip)



Fig. 2: Pipette Tool placed in Park Station



Distributed by:

Axel Semrau GmbH & Co. KG

Stefansbecke 42 • 45549 Sprockhövel • Deutschland
Tel. +49 23 39 12 09-0 • info@axelsemrau.de
www.axelsemrau.de

<http://www.palsystem.com/index.php?id=284>



© 2017 CTC Analytics AG. All rights reserved. Neither this publication nor any part hereof may be copied, photocopied, reproduced, translated, distributed or reduced to electronic medium or machine readable form without the prior written permission from CTC Analytics AG, except as permitted under copyright laws. CTC Analytics AG acknowledges all trade names and trademarks used as the property of their respective owners.

PAL is a registered trademark of CTC Analytics AG | Switzerland

Date of print: 02.2017 | CTC Analytics AG, Industriestrasse 20, CH-4222 Zwingen, Switzerland, T +41 61 765 81 00, Contact: info@ctc.ch